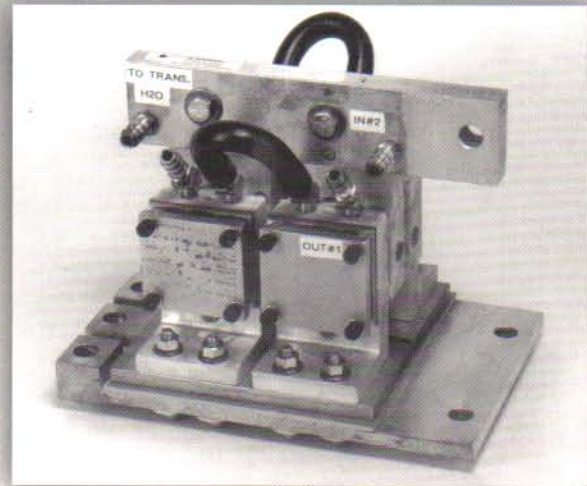


Darrah Center Tap Rectifier Stacks for Fixture Type Welding Transformers

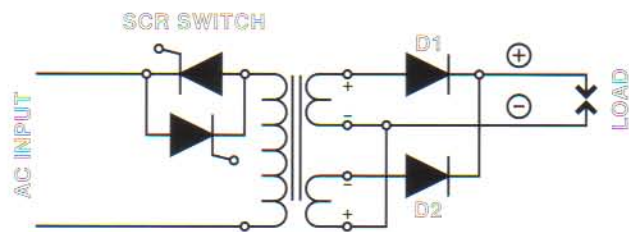
Available for Inline or Staggered Lugs

- ❖ Darrah now supplies center tap rectifier stacks for fixture type welding transformers.
- ❖ Darrah's rectifier stacks are available for both inline and staggered lug transformer designs.
- ❖ Three output current ratings are now available: 10,000 amps, 19,000 amps and 27,000 amps.
- ❖ Darrah's rectifier stacks are water-cooled and easily mount to existing transformer secondary lugs.
- ❖ Standard single-phase weld controls are still used, no need for any re-wiring.



Part No.: WRI19

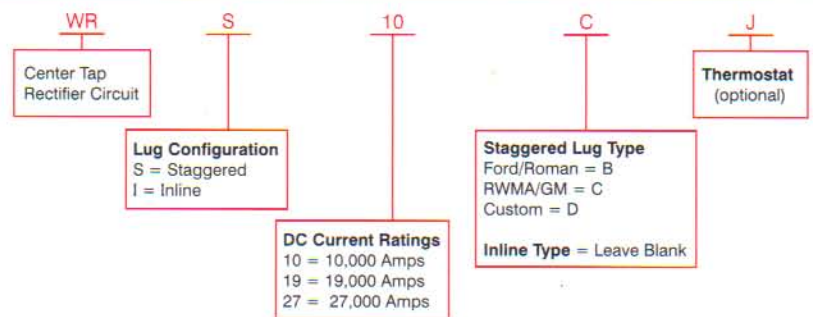
Inline Lug Model 19,000 Amp Rated



Advantages of DC Over Single Phase AC in Resistance Welding

- ❖ Darrah's DC rectifier stacks will improve power factor significantly.
- ❖ Helps compensate for inadequate or sagging AC power lines.
- ❖ In larger throat fixtures, reduce inductive losses, therefore increasing welding current.
- ❖ Certain alloys exhibit improved weld quality with DC.
- ❖ Get more welding current to the weld using existing transformer and control.

Part Number Designation Code



D.C Current ratings taken at:

5% Duty cycle
10-12 Weld cycles
Maximum diode junction
Temperature: 110°C

Water Connection:

Fits 3/8 inch
water hose.

Thermostat: (optional)

D.C. Rectifier Stacks can be supplied with a thermostat sensor, 70°C open on rise. Thermostat leads are 12 inches long.

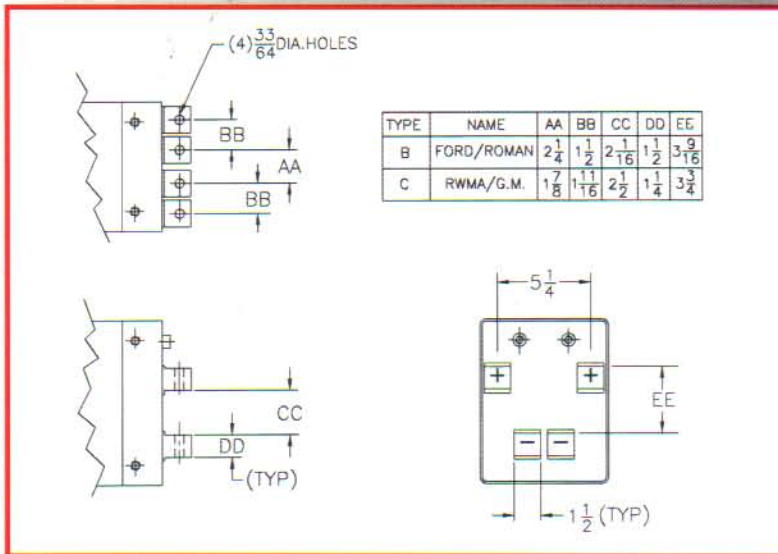


Darrah Electric Company

CALL TOLL FREE 1-800-621-0014

www.darrahelectric.com

Staggered Lug Types

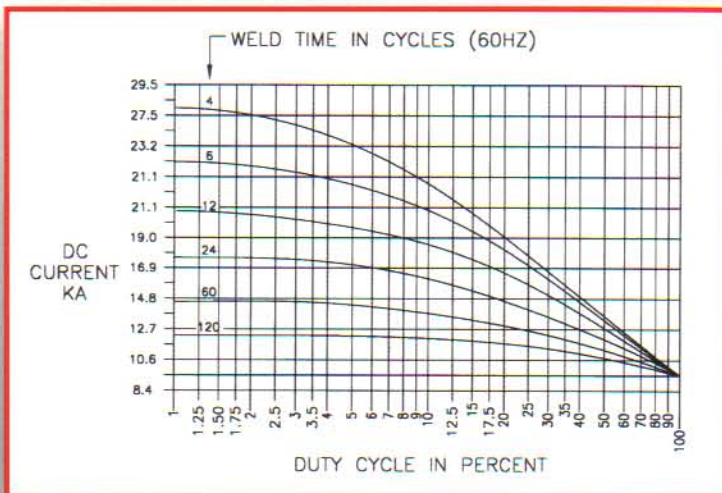


DC Output Ratings	No. of Diodes per Leg	Water Requirements	Weight
10,000 Amps	1	1 GPM	25 lbs.
19,000 Amps	2	2 GPM	40 lbs.
27,000 Amps	3	3 GPM	65 lbs.

ABB

ABB Semiconductors is the exclusive supplier for Darrah rectifier stacks. Contact Darrah Electric for more information on ABB products.

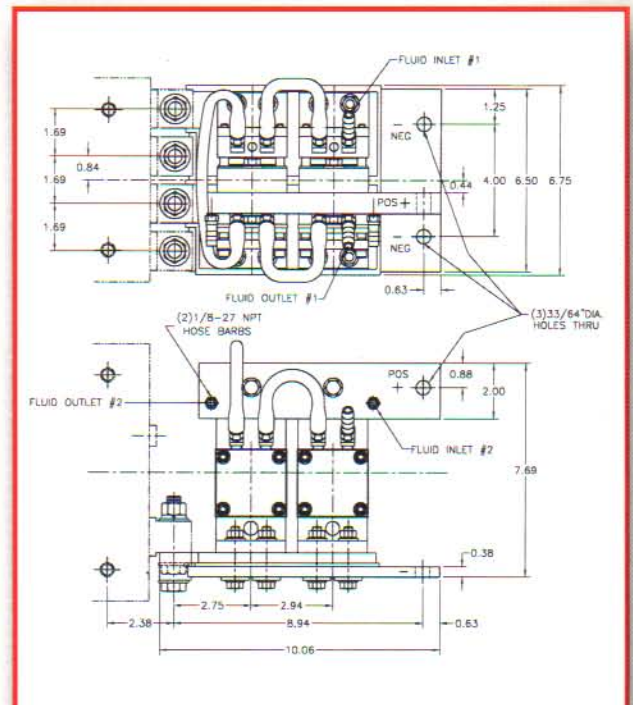
Center Tap Rectifier Stack (2) Diodes per Leg



This duty cycle curve is based on rated water flow of 2 G.P.M. and maximum water temperature of 30° C.

Rectifier Rating:
% Duty cycle is based on shortest time from beginning of one weld to the beginning of next weld. On time/on + off time.

Duty cycle curves are available for all models.



Center Tap Rectifier Stack
Part No: WRI19
Inline Lugs

Drawings are available for all models



Visa and Mastercard Accepted



Darrah Electric Company

5914 MERRILL AVENUE • CLEVELAND, OHIO 44102-5699
Toll Free Cleveland Fax E-mail
800-621-0014 216/631-0912 216/631-0440 decdarrah@earthlink.net
www.darrahelectric.com